

Spire[®]

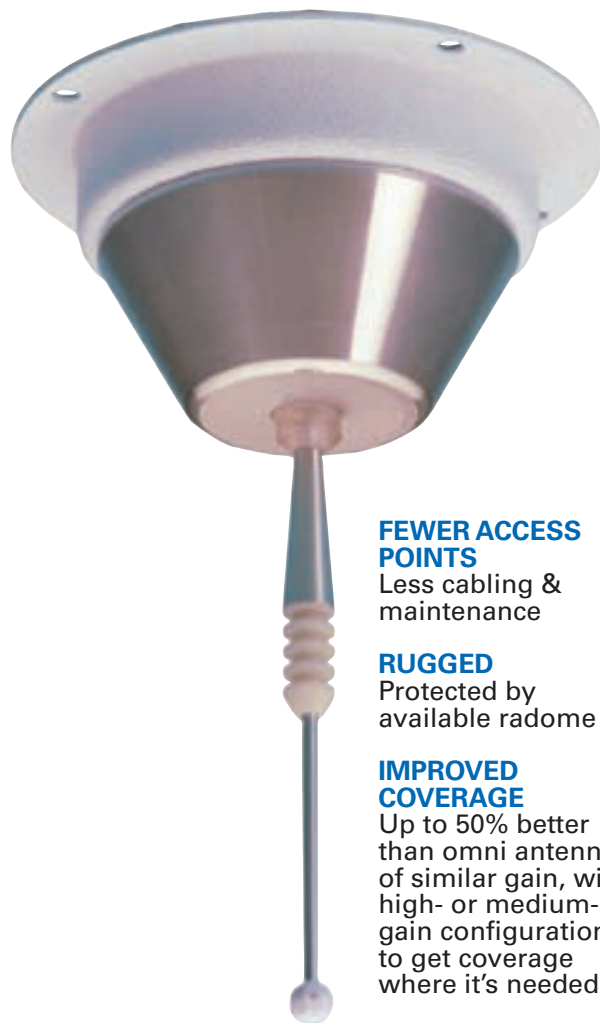
SPACE-BASED TECHNOLOGY COVERS YOUR FACILITY. AND YOUR BACK.



Based on technology originally designed for space applications, this omni-directional antenna increase coverage, performance, and reliability of 2.4 GHz wireless LANs. The patented design provides improved horizontal and vertical coverage patterns resulting in a larger footprint, improved throughput, and superior performance in multipath environments.

Spire installations require fewer access points. Fewer access points reduce power, data cabling requirements, and maintenance and management resources.

It's WLAN technology that covers your back. And every other angle. Visit lxe.com to learn more.



FEWER ACCESS POINTS

Less cabling & maintenance

RUGGED

Protected by available radome

IMPROVED COVERAGE

Up to 50% better than omni antennae of similar gain, with high- or medium-gain configurations to get coverage where it's needed



Spire[®] Antenna

TECHNICAL SPECIFICATIONS



ELECTRICAL CHARACTERISTICS

Frequency

- 2.4 to 2.5GHz

Impedance

- 50 ohms

VSWR

- 15:1

Polarization

- Vertical

High gain version

- Gain - 6 dB1 typical
- Beamwidth - 35° typical

Medium gain version

- Gain - 3 dBi typical
- Beamwidth - 40° typical

Pattern

- Omnidirectional

MECHANICAL CHARACTERISTICS

Height

- High gain w/o radome - 6" (15.24cm)
- Medium gain w/o radome - 3" (6.12cm)
- Radome - 6.2" (15.7cm)

Weight

- No radome or bracket - .10 lbs (45g)
- With radome and bracket - 2.1lbs (945g)

Radome material

- Royalite R450M

Radios supported

- 2.4GHz FHSS
- 2.4GHz DSSS

Connector

- Reverse TNC

Temperature

- -40° to 158°F (-40° to 70°C)

Mounting Options

- Ceiling enclosure
- Masts

MODEL NUMBERS

Industrial Spire (includes radome)

- 3dBi: 6000283ANTENNA
- 6dBi: 6000282ANTENNA

Commercial Spire (No radome)

- 3dBi, 5" cable: 6000279ANTENNA
- 3 dBi, 50" cable: 6000280ANTENNA
- 6dBi, 5" cable: 6000277ANTENNA
- 6dBi, 50" cable: 6000278ANTENNA

ENVIRONMENTAL

Approvals

- RoHS compliant

Configuration	Vertical Bandwidth	Down Tilt	Antenna Length
High gain on ground plane	25°	25°	6"
Medium gain on ground plane	28°	12°	3"
High gain off ground plane	35°	35°	6"
Medium gain off ground plane	40°	5°	3"



LXE[®]



125 Technology Parkway
Norcross, GA 30092
1-800-664-4593
www.lxe.com